

“Maureen” Cluster “Final” Composition and Lineage Documentation

by Lois Abromitis Mackin

November 2023

NOTES:

The information here supplements the findings reported in the author’s article in the January 2024 issue of The Septs.

All URLs were verified 19 November 2023.

“Final” “Maureen” Cluster Composition

Table 1 shows the composition of the “Maureen” cluster after adding matches from Jere Mackin’s DNA kits at 23andMe, MyHeritage, and GEDmatch to the matches already identified at Ancestry.

Table 1. Matches in the “Maureen” cluster at Ancestry, 23andMe, MyHeritage, and GEDmatch.

Kit name	DNA Shared with Jere	Role in cluster	Testing site	Identified matches	Tree information for unidentified matches
Jere Mackin	Self	Tester	Ancestry, 23andMe, FTDNA, MyHeritage, GEDmatch		
Kathryn Mackin	3,478 cM	Shared match	Ancestry	Jere’s daughter	
Patrick Mackin	2,842 cM	Shared match with Jere & “Maureen”	Ancestry, FTDNA, MyHeritage, GEDmatch	Jere’s full sibling	
Richard Mackin	2,727 cM	Shared match with Jere & “Maureen”	Ancestry, FTDNA, MyHeritage, GEDmatch	Jere’s full sibling	
Joann Mackin	2,722 cM	Shared match with Jere & “Maureen”	Ancestry, FTDNA, GEDmatch	Jere’s full sibling	
Elizabeth	248 cM	Shared match with Jere & “Maureen”	Ancestry, FTDNA, GEDmatch	Jere’s 2 nd cousin, common ancestor John Mackin	
Maryl	160 cM	Shared match with Jere & “Maureen”	Ancestry	Jere’s 2 nd cousin, common ancestor John Mackin	
Mary2	133 cM	Shared match with Jere & “Maureen”	23andMe	Jere’s 2 nd cousin, common ancestor John Mackin	
Mary3	294 cM	Shared match with Jere & “Maureen”	23andMe	Jere’s 2 nd cousin, common ancestor John Mackin	
Michael1	91 cM	Shared match with Jere & “Maureen”	Ancestry	Jere’s 3 rd cousin, common ancestors Christopher Mackin-Mary Nevins	
Michael2	34 cM	Shared match with Jere & “Maureen”	Ancestry	Jere’s 3 rd cousin, common ancestors Christopher Mackin-Mary Nevins	
“Maureen”	97 cM	Match of interest	Ancestry, 23andMe		No tree
“Brendan”	67 cM	Shared match with Jere & “Maureen”	Ancestry		Public linked tree, 5 people (all private)
“Erin”	65 cM	Shared match with Jere & “Maureen”	Ancestry		Public linked tree, 5 people (all private)
“Nicholas”	64 cM	Shared match with Jere & “Maureen”	Ancestry		Public linked tree, 2 people (both private)

“Maureen” Cluster “Final” Composition and Lineage Documentation
by Lois Abromitis Mackin
November 2023

Kit name	DNA Shared with Jere	Role in cluster	Testing site	Identified matches	Tree information for unidentified matches
“Meghan”	41 cM	Shared match with Jere & “Maureen”	Ancestry		Public unlinked tree, 38 people, mainly paternal
“Patrick”	26 cM	Shared match with Jere & “Maureen”	Ancestry		Public linked tree, 3 people
“Mary Eileen”	23 cM	Shared match with Jere & “Maureen”	Ancestry		No tree
“Sheila”	22 cM	Shared match with Jere & “Maureen”	Ancestry		Public linked tree, 65 people
“Pat”	22 cM	Shared match with Jere & “Maureen”	Ancestry, MyHeritage, GEDmatch		Public linked tree, 1,895 people
“E.T.”	20 cM	Shared match with Jere & “Maureen”	Ancestry, GEDmatch		Public linked tree, 1,895 people, same tree as “Pat”
“Ashley”	26 cM	Shared match with Jere, “Meghan,” “Mary Eileen,” “Sheila,” “Victoria”	Ancestry		Public linked tree, 13 people
“Victoria”	20 cM	Shared match with Jere, “Meghan,” “Sheila,” “Ashley”	Ancestry		Public linked tree, 44 people
“2005rewind”	24 cM	Shared match with Jere, “Meghan,” “Ashley,” “Victoria,” “E.T.”	Ancestry		Public unlinked tree, 2 people
“David”	46.4 cM	Shared match with Jere & “Pat”	MyHeritage		4 people
“Linda”	12.7 cM	Shared match with Jere, “Pat,” “David”	Ancestry, MyHeritage		No tree

Source: Ancestry shared matches, Jere Mackin and “Maureen,” Jere Mackin and “Meghan,” Jere Mackin and “Sheila,” Jere Mackin and “Victoria,” Jere Mackin and “Ashley,” and Jere Mackin and “E.T.,” author’s screenshots dated 15 Nov 2023, author’s files. Also, MyHeritage shared matches, Jere Mackin and “Pat,” author’s screenshots dated 19 Nov 2023, author’s files. Also, 23andMe shared matches, Jere Mackin and “Maureen,” author’s screenshots, author’s presentation “An Irish Cluster in New York,” 2022, author’s files.

DNA shared by selected cluster members with Mackin siblings

Table 2 shows the amount of DNA (cM and number of segments) shared by “Maureen” cluster members with Jere Mackin and his full siblings.

Table 2. DNA (cM and segments) shared by members of the “Maureen” cluster and the Mackin siblings.

“Maureen” cluster	Jere	Patrick	Joann	Richard
“Maureen”	97 cM, 1 segment	108 cM, 2 segments	108 cM, 2 segments	106 cM, 2 segments
“Brendan”	67 cM, 4 segments	119 cM, 5 segments	65 cM, 4 segments	59 cM, 4 segments
“Erin”	65 cM, 4 segments	119 cM, 5 segments	63 cM, 4 segments	60 cM, 4 segments
“Nicholas”	64 cM, 1 segment	60 cM, 1 segment	62 cM, 1 segment	59 cM, 1 segment
“Meghan”	41 cM, 1 segment	38 cM, 1 segment	42 cM, 1 segment	40 cM, 1 segment
“Patrick”	26 cM, 1 segment	23 cM, 1 segment	24 cM, 1 segment	22 cM, 1 segment

November 2023

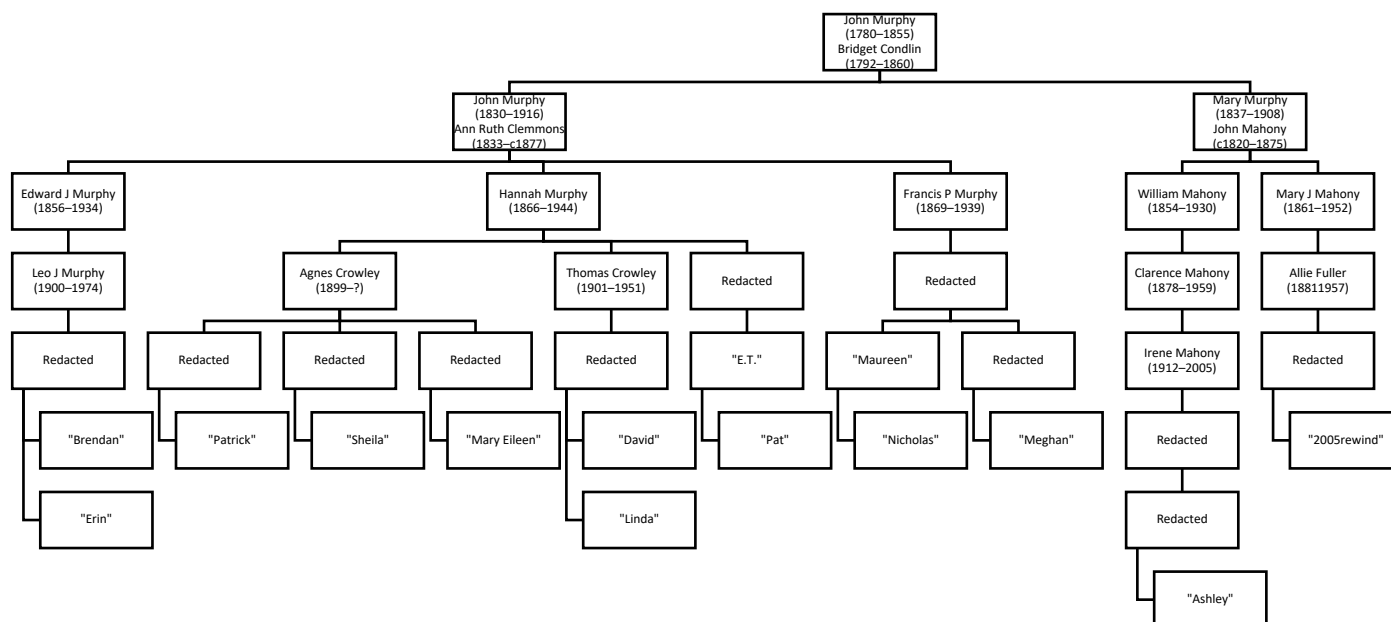
“Maureen” cluster	Jere	Patrick	Joann	Richard
“Mary Eileen”	23 cM, 1 segment	19 cM, 1 segment	20 cM, 1 segment	18 cM, 1 segment
“Sheila”	22 cM, 1 segment	21 cM, 1 segment	22 cM, 1 segment	22 cM, 1 segment
“Pat”	22 cM, 1 segment	21 cM, 1 segment	22 cM, 1 segment	21 cM, 1 segment
“E.T.”	20 cM, 1 segment	19 cM, 1 segment	19 cM, 1 segment	18 cM, 1 segment
“Ashley”	26 cM, 1 segment	24 cM, 1 segment	26 cM, 1 segment	25 cM, 1 segment
“Victoria”	20 cM, 1 segment	19 cM, 1 segment	21 cM, 1 segment	21 cM, 1 segment
“2005rewind”	24 cM, 1 segment	24 cM, 1 segment	27 cM, 1 segment	20 cM, 2 segments
“David”	46.4 cM, 1 segment	57.6 cM, 1 segment	<i>Not at MyHeritage</i>	50.4 cM, 1 segment
“Linda”	12.7 cM, 1 segment	20 cM, 1 segment	21 cM, 1 segment	20 cM, 1 segment

Source: Ancestry, MyHeritage, and GEDmatch shared DNA, Jere Mackin, Patrick Mackin, Joann Mackin, Richard Mackin and "Maureen," author's screenshots, various dates in 2022 and 2023, author's files.

Descent of the “Maureen” cluster from John Murphy and Bridget Condlin

Figure 1 shows the descent of “Maureen” cluster members from John Murphy and Bridget Condlin of the parish of Rathkenny, County Meath, and St. Lawrence County, New York.

Figure 1. Descent of “Maureen” cluster members from John Murphy and Bridget Condlin.



Note: Names of testers' parents and living individuals have been redacted.

Sources:

“Maureen” Cluster “Final” Composition and Lineage Documentation

by Lois Abromitis Mackin

November 2023

For “Brendan” to their parent, see “Minnesota, Birth Index, 1935–2000,” Ancestry (<https://www.ancestry.com/search/collections/8742/>), entry for “Brendan.” For “Brendan’s” parent to Leo J. Murphy, see “Minnesota, Death Index, 1908–2017,” Ancestry (<https://www.ancestry.com/search/collections/7316/>), entry for Redacted. For Leo J. Murphy to Edward J. Murphy, see 1910 U.S. census, Clay County, Minnesota, population schedule, enumeration district (ED) 51, Felton township, sheet 1B, dwelling 18, family 18, Leo J. Murphy. For Edward J. Murphy to John Murphy, see 1880 U.S. census, St. Lawrence Co., N.Y., pop. sch., ED 224, pp. 29A–30B, dwell. 255, fam. 261, Edward Murphy. For John Murphy to John Murphy, see St. Lawrence Co., N.Y., Minutes & Orders, 4: 66–67; imaged in “New York, U.S., Wills and Probate Records, 1659–1999,” Ancestry (<https://www.ancestry.com/search/collections/8800/>), St. Lawrence Co. > Minutes and Orders, vol. 0004–0005, 1854–1867 > image 51 of 603.

For “Erin” to their parent, see “Minnesota, Birth Index, 1935–2000,” Ancestry (<https://www.ancestry.com/search/collections/8742/>), entry for “Erin.”

For “Patrick” to their parent, see “Minnesota, Birth Index, 1935–2000,” Ancestry (<https://www.ancestry.com/search/collections/8742/>), entry for “Patrick.” For “Patrick’s” parent to Agnes Crowley, see 1940 U.S. census, Westchester Co., N.Y., pop. sch., ED 60-384, sheet 17B, hh 271, John M. O’Rourke family. For Agnes (Crowley) O’Rourke to Hannah Murphy, see “New York, County Marriage Records, 1847–1849, 1907–1936,” Ancestry (<https://www.ancestry.com/search/collections/61377/>), John M. O’Rourke–Agnes M. Crowley, St. Lawrence Co. (1924). For Hannah Murphy to John Murphy, see 1880 U.S. census, St. Lawrence Co., N.Y., pop. sch., ED 224, pp. 29A–30B, dwell. 255, fam. 261, Hannah Murphy.

For “Sheila” to their parent, see “Redacted,” The (Nashville, Tenn.) Tennessean, 13 June 2006, p. B5, col. 2. For their parent to Agnes Crowley, see “U.S., Social Security Applications and Claims Index, 1936–2007,” Ancestry (<https://www.ancestry.com/search/collections/60901/>), entry for Redacted.

For “Mary Eileen” to their parent, see “U.S., Obituary Collection, 1930–Current,” Ancestry (<https://www.ancestry.com/search/collections/7545/>), entry for Redacted. For their parent to Agnes Crowley, see “U.S., Social Security Applications and Claims Index, 1936–2007,” Ancestry (<https://www.ancestry.com/search/collections/60901/>), entry for Redacted.

For “David” to their parent, see “U.S., Cemetery and Funeral Home Collection, 1847–Current,” Ancestry (<https://www.ancestry.com/search/collections/2190/>), entry for Redacted’s spouse. For their parent to Thomas Crowley, see uncited obituary transcribed in Find A Grave entry for Redacted. For Thomas Crowley to Hannah Murphy, see “Michigan, U.S., Marriage Records, 1867–1952,” Ancestry (<https://www.ancestry.com/search/collections/9093/>), Registers, 1887–1925 > 1921–1925 > 1924 Kalamazoo-Monroe, item 155 for Thomas Crowley–Esther Murlin.

For “Linda” to their parent, see “U.S., Cemetery and Funeral Home Collection, 1847–Current,” Ancestry (<https://www.ancestry.com/search/collections/2190/>), entry for Redacted’s spouse.

For “E.T.” to their parent, see “Redacted,” Chicago Tribune, 15 February 2004, p. 4-9, col. 1. For Redacted to Hannah Murphy, see “New York, County Marriage Records, 1847–1849, 1907–1936,” Ancestry (<https://www.ancestry.com/search/collections/61377/>), St. Lawrence > 1925–1930 > image 1384 of 1501 for Redacted.

For “Pat” to their parent, see “Redacted,” Chicago Tribune, 15 February 2004, p. 4-9, col. 1.

For “Maureen” to their parent and their parent to Francis P. Murphy, see “Redacted,” Green Bay (Wisconsin) Press Gazette, 26 Dec 1984, p.C-8, col. 2. For Francis P. Murphy to John Murphy, see North Dakota, State Health Department, death certificate 3383 for Francis Patrick Murphy (1939); imaged in “North Dakota, U.S., State Death Certificates 1908–2007,” Ancestry (<https://www.ancestry.com/search/collections/61747/>), 1939 > 03001–03500 > image 383 of 500.

For “Nicholas” to their parent, see BeenVerified search for “Maureen,” author’s screenshot, 19 Nov 2023, author’s files.

For “Meghan” to their parent, their unlinked tree identifies the surnames of her parents and the full names of her grandparents and great-grandfather Francis Patrick Murphy.

For “Ashley” to their parent, their linked tree identifies their paternal and maternal grandparents. From there, it was possible to identify the paternal grandfather’s spouse. The couple’s marriage license, available at Ancestry, names her mother, Irene M. Mahoney. For Irene Mahoney to Clarence M. Mahony, see 1930 U.S. census, Los Angeles Co., Cal., pop. sch., Alhambra, ED 1400, sheet 6A, dwell. 28, fam. 139, Irene M. Mahony. For Clarence M. Mahony to William H. Mahony, see 1900 U.S. census, Brigham Co., Ia., pop. sch., Brigham, ED 57, sheet 11B, dwell. 211, fam. 215, Clarence Mahoney. For William H. Mahony to Mary Murphy, see 1870 U.S. census, Dane Co., Wis., pop. sch., Springdale, pp. 552A–B, dwell. 49,

“Maureen” Cluster “Final” Composition and Lineage Documentation

by Lois Abromitis Mackin

November 2023

fam. 49, William H. Mahoney. For Mary Murphy to John Murphy, see St. Lawrence Co., N.Y., Minutes & Orders, 4: 66–67; imaged in “New York, U.S., Wills and Probate Records, 1659–1999,” Ancestry (<https://www.ancestry.com/search/collections/8800/>), St. Lawrence Co. > Minutes and Orders, vol 0004–0005, 1854–1867 > image 51 of 603.

“2005rewind’s” unlinked tree identifies their deceased father. From there it was possible to identify their mother and grandparents. For Allie Fuller to Mary Jane Malony, see “Wisconsin, U.S., Births and Christenings Index, 1801–1928,” Ancestry (<https://www.ancestry.com/search/collections/2544/>), entry for Allie Fuller, Fulton, Rock County (1882). For Mary J. Mahoney to Mary (Murphy) Mahony, see “Wisconsin, U.S., Marriage Records, 1820–2004,” Ancestry (<https://www.ancestry.com/search/collections/61484/>), Pre-1907 > Dane > image 9173 of 20850.
